

# PERI MULTIFLEX

## The Flexible Slab Formwork System

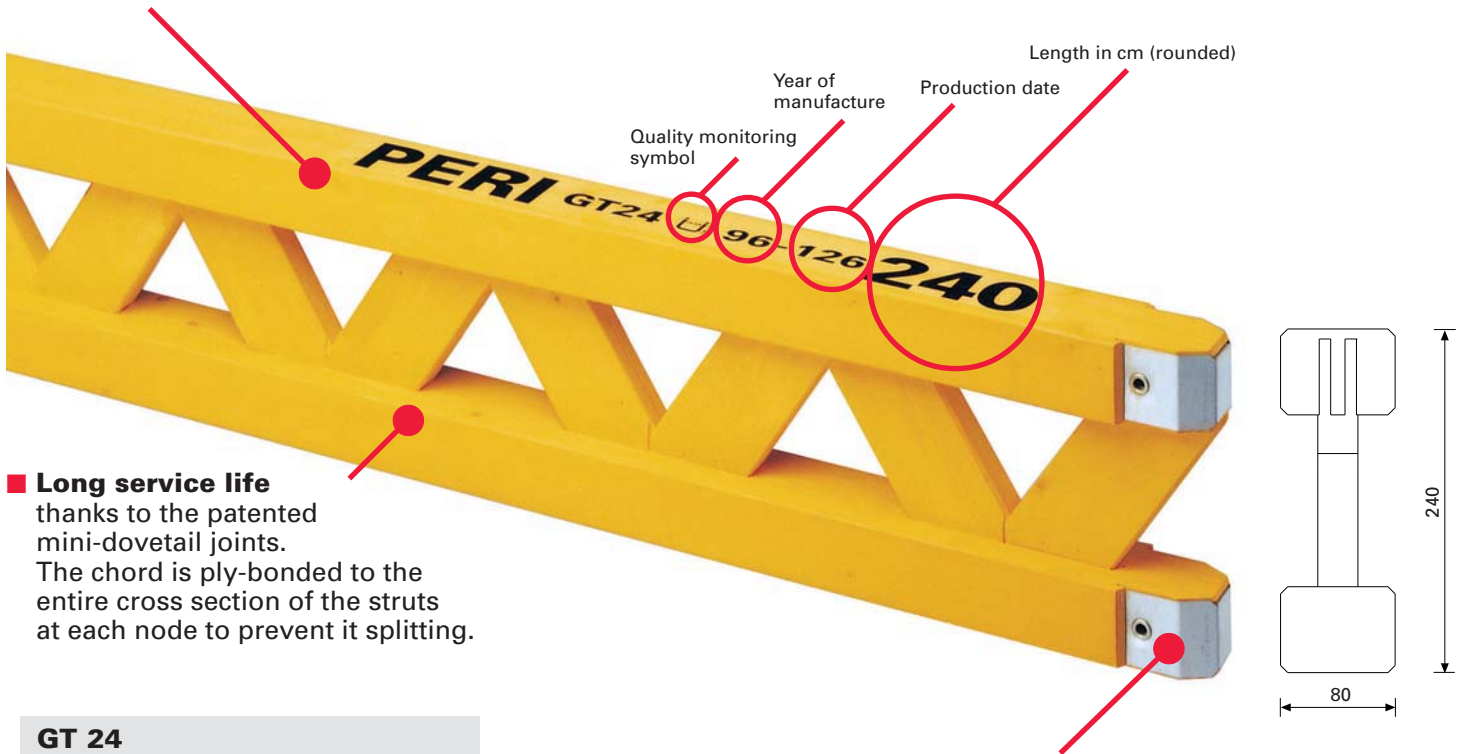
PERI MULTIFLEX, is the girder based slab formwork system for any shape and any floor height.

### ■ Long service life

thanks to strong practical 60 x 80 mm chords for nailing.

### The GT 24 girder

allows large spans and thus reduces the number of components required. The high load-bearing capacity increases the cost-effectiveness.



### GT 24

Permissible shear force on struts  $Q_D$  = 14.0 kN

Permissible shear force on ties  $Q_Z$  = 13.0 kN

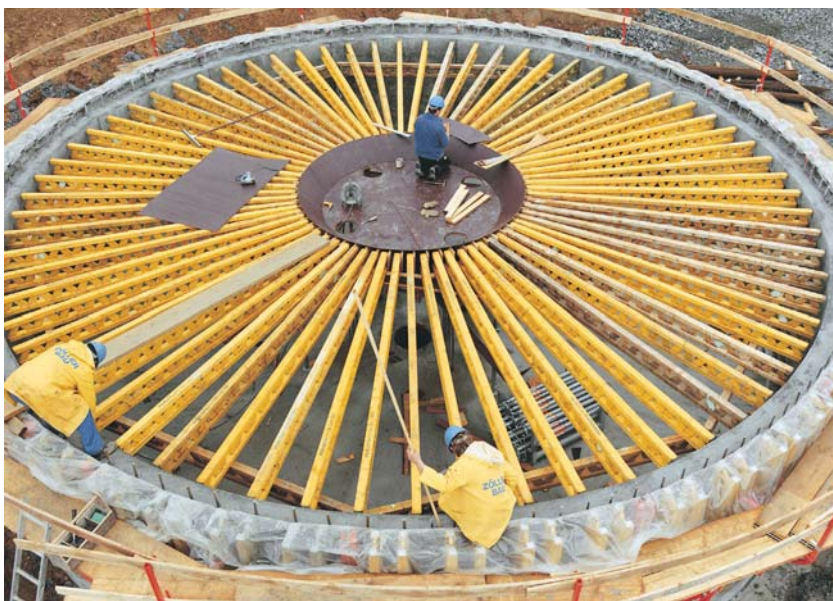
Permissible bending moment  $M$  = 7.0 kNm

Moment of inertia  $I_y$  = 8000 cm<sup>4</sup>

■ When using the 24 clawhead the reaction force of 28 kN can also be taken between the girder nodes.

■ Long service life thanks to the riveted steel caps providing robust end protection.

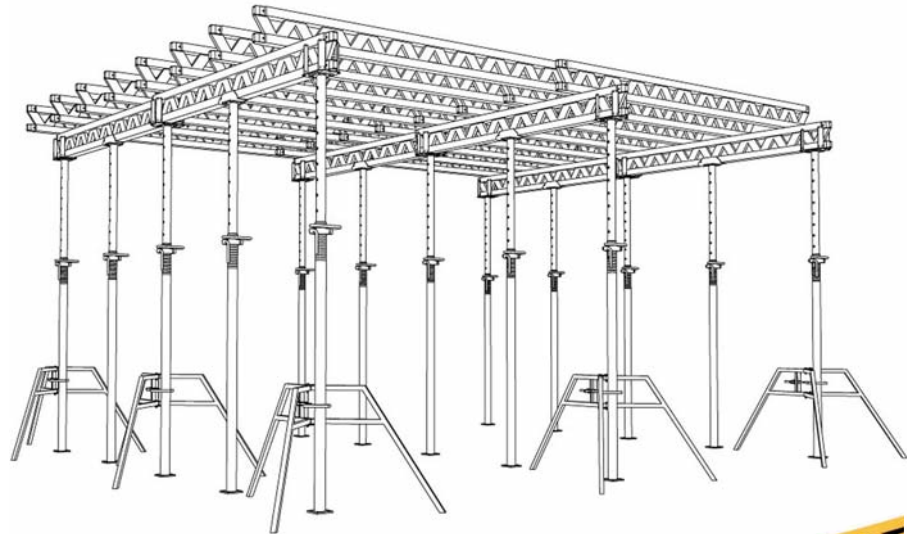
The PERI safety handrail holder is simply screwed tight.



# PERI MULTIFLEX

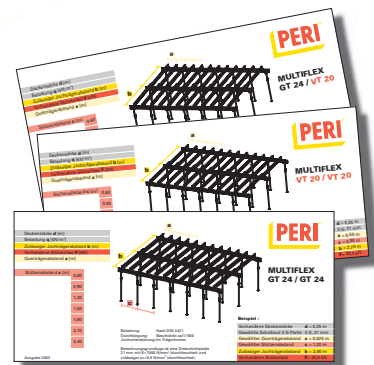
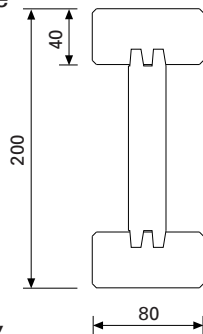


More information can be found in the brochure.



**The VT 20K girder** can be used for smaller slab thicknesses.

- The steel cap fixed with a steel rivet gives maximum protection against knocks and splitting at the end of the girder. It also prevents it being sawn off accidentally.
- The high-density web board with high synthetic resin content makes the girder strong and rigid in use.
- The 40 x 80 mm cross section of the chords of both girders prevents them tilting, and is strong enough to withstand nailing.



Simple planning process with the MULTIFLEX slide rulers in 3 combinations.

## VT 20K

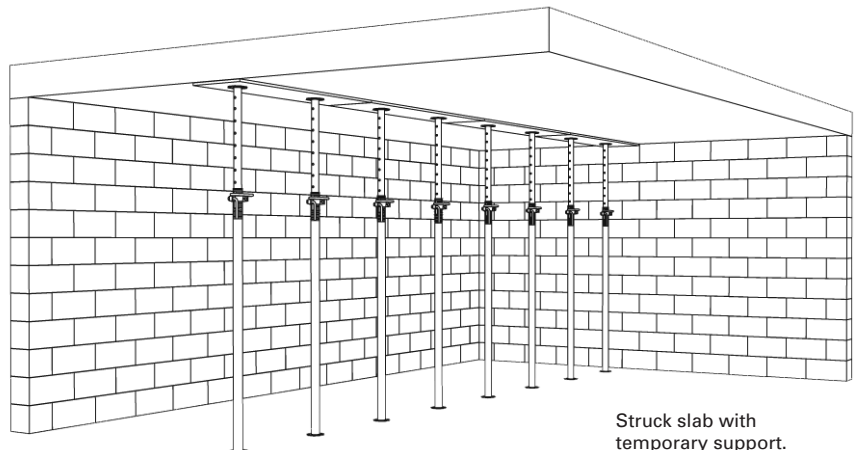
perm.  $Q_z = 11.0 \text{ kN}$   
 max.  $A = 22 \text{ kN}$   
 perm.  $M = 5.0 \text{ kNm}$   
 $I_y = 4290 \text{ cm}^4$

## ■ Early striking with temporary support

Temporary props must be positioned to enable early striking. This releases the formwork for faster re-use.

### Early striking:

First the temporary props must be positioned in the middle of the span (and other places if necessary) to satisfy the structural requirements. The actual striking operation is then carried out in the normal way. This means only a few additional props and sheets of formlining are needed.



Struck slab with temporary support.